

HSK holders

SK holders

BT holders

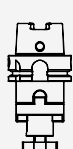
CAPTO holders

HSK/
WD



page 208

HSK/
KFD



page 211

HSK/
KBF



page 213

HSK/
MK



page 214

SK/
WD



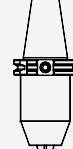
page 216

SK/
KFD



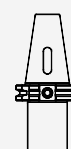
page 218

SK/
KBF



page 219

SK/
MK



page 220

BT/
WD



page 221

BT/
KFD



page 223

BT/
KBF



page 224

BT/
MK



page 225

C/WD



page 226

C/MA



page 230

VAN CUTSEM tools

Quality tools for metalworking



Tel 03 776 84 92 - www.vancutsemtools.be

HSK holders

SK holders

BT holders

CAPTO holders

HSK/
WD

HSK/
KFD

HSK/
KBF

HSK/
MK

SK/
WD

SK/
KFD

SK/
KBF

SK/
MK

BT/
WD

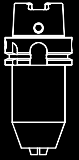
BT/
KFD

BT/
KBF

BT/
MK

C/WD

C/MA



page 208

page 211

page 213

page 214

page 216

page 218

page 219

page 220

page 221

page 223

page 224

page 225

page 226

page 230



REGO-FIX

Toolholders and adapters



	WD	MA	KFD	KBF	MK
HSK	•	–	•	•	•
SK	•	–	•	•	•
BT	•	–	•	•	•
CAPTO	•	•	–	–	–
Balancing	Balanced by design	Balanced by design	Balanced by design	Balanced by design	Balanced by design
Diameter range	6–40	16–40	16–50	1–13	Mk1–Mk4

Weldon end mill holders HSK/WD

Designed for rotating applications, all our HSK holders are suited for high-speed applications where a consistent performance is key.

DIN 69893/ISO 12164

Features of end mill holders (Weldon)

Runout TIR $\leq 3 \mu\text{m}$

Measured from inner bore to outer taper.

Side locking screw

For highest transferable torque.

ID chip hole (only HSK form A)

In accordance with DIN 69873 for 10 mm diameter.
Available on request.

Expert advice

For all HSK-A and HSK-E form holders a range of coolant tubes (KSR) is available.

For KSR part numbers please refer to page 265.



Weldon end mill holders HSK-A/WD

HSK/WD

DIN 69893

ISO 12164

Type	Part no.	Dimensions [mm]			Drawing
		d	D	L	
HSK-A 32					
HSK-A 32/WD 6 x 055*	2532.30620	6	25	55	1
HSK-A 32/WD 8 x 055*	2532.30820	8	28	55	1
HSK-A 32/WD 10 x 063*	2532.31030	10	35	63	1
HSK-A 32/WD 12 x 065*	2532.31230	12	42	65	1
HSK-A 40					
HSK-A 40/WD 6 x 060	2540.30630	6	25	60	1
HSK-A 40/WD 8 x 060	2540.30830	8	28	60	1
HSK-A 40/WD 10 x 060	2540.31030	10	35	60	1
HSK-A 40/WD 12 x 070	2540.31240	12	42	70	1
HSK-A 40/WD 14 x 075	2540.31440	14	44	75	1
HSK-A 40/WD 16 x 075	2540.31640	16	48	75	1
HSK-A 50					
HSK-A 50/WD 12 x 080	2550.31250	12	42	80	1
HSK-A 50/WD 14 x 080	2550.31450	14	44	80	1
HSK-A 50/WD 18 x 080	2550.31850	18	50	80	1
HSK-A 63					
HSK-A 63/WD 6 x 065	2563.30630	6	25	65	1
HSK-A 63/WD 8 x 065	2563.30830	8	28	65	1
HSK-A 63/WD 10 x 065	2563.31030	10	35	65	1
HSK-A 63/WD 12 x 080	2563.31250	12	42	80	1
HSK-A 63/WD 14 x 080	2563.31450	14	44	80	1
HSK-A 63/WD 16 x 080	2563.31650	16	48	80	1
HSK-A 63/WD 18 x 080	2563.31850	18	50	80	1
HSK-A 63/WD 20 x 080	2563.32050	20	52	80	1
HSK-A 63/WD 25 x 110	2563.32560	25	65	110	2
HSK-A 63/WD 32 x 110	2563.33260	32	72	110	2

*HSK taper without side hole

Weldon end mill holders

HSK-A/WD and HSK-E/WD

HSK/WD

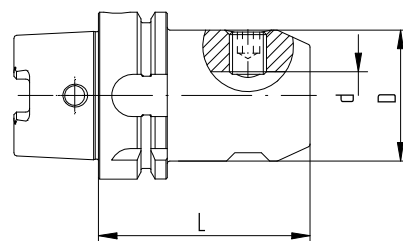
DIN 69893

ISO 12164

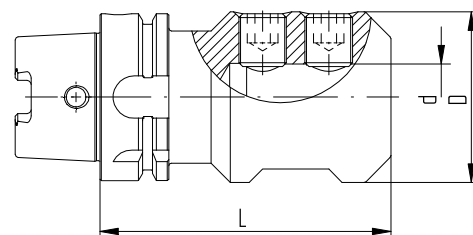
Type	Part no.	Dimensions [mm]			Drawing
		d	D	L	
HSK-A 100					
HSK-A 100/WD 6 x 080	2500.30650	6	25	80	1
HSK-A 100/WD 8 x 080	2500.30850	8	28	80	1
HSK-A 100/WD 10 x 080	2500.31050	10	35	80	1
HSK-A 100/WD 12 x 080	2500.31250	12	42	80	1
HSK-A 100/WD 14 x 080	2500.31450	14	44	80	1
HSK-A 100/WD 16 x 100	2500.31660	16	48	100	1
HSK-A 100/WD 18 x 100	2500.31860	18	50	100	1
HSK-A 100/WD 20 x 100	2500.32060	20	52	100	1
HSK-A 100/WD 25 x 100	2500.32560	25	65	100	2
HSK-A 100/WD 32 x 100	2500.33260	32	72	100	2
HSK-A 100/WD 40 x 110	2500.34060	40	80	110	2
HSK-E 40					
HSK-E 40/WD 10 x 060	2540.31034	10	35	60	1
HSK-E 40/WD 12 x 070	2540.31244	12	42	70	1
HSK-E 40/WD 16 x 070	2540.31644	16	48	70	1

Included in delivery: End mill holder and lock screw

HSK-A: Hole for data carrier DIN STD 69873 in the flange available on request



Drawing 1 HSK-A/WD



Drawing 2 HSK-A/WD

Universal shell/face mill holders

HSK-A/KFD and HSK-E/KFD

HSK/KFD

DIN 69893

ISO 12164

Type	Part no.	Dimensions [mm]			Drawing	Accessories
		D	D1	L		Wrench
HSK-A 32						
HSK-A 32/KFD 16 x 045	2532.41620	16	32	45	1	FDS 16
HSK-A 32/KFD 22 x 050	2532.42230	22	40	50	1	FDS 22
HSK-A 40						
HSK-A 40/KFD 16 x 030	2540.41600	16	32	30	1	FDS 16
HSK-A 40/KFD 22 x 050	2540.42230	22	40	50	1	FDS 22
HSK-A 50						
HSK-A 50/KFD 16 x 050	2550.41630	16	32	50	1	FDS 16
HSK-A 50/KFD 22 x 050	2550.42230	22	40	50	1	FDS 22
HSK-A 50/KFD 32 x 065	2550.43240	32	58	65	2	FDS 32
HSK-A 63						
HSK-A 63/KFD 16 x 060	2563.41640	16	32	60	1	FDS 16
HSK-A 63/KFD 22 x 060	2563.42240	22	40	60	1	FDS 22
HSK-A 63/KFD 27 x 060	2563.42740	27	48	60	1	FDS 27
HSK-A 63/KFD 32 x 060	2563.43240	32	58	60	1	FDS 32
HSK-A 63/KFD 40 x 070	2563.44050	40	70	70	2	FDS 40
HSK-A 100						
HSK-A 100/KFD 16 x 060	2500.41640	16	32	60	1	FDS 16
HSK-A 100/KFD 22 x 060	2500.42240	22	40	60	1	FDS 22
HSK-A 100/KFD 27 x 060	2500.42740	27	48	60	1	FDS 27
HSK-A 100/KFD 32 x 060	2500.43240	32	58	60	1	FDS 32
HSK-A 100/KFD 40 x 070	2500.44050	40	70	70	1	FDS 40
HSK-A 100/KFD 50 x 080	2500.45060	50	90	80	2	FDS 50
HSK-E 40						
HSK-E 40/KFD 16 x 045	2540.41624	16	32	45	–	FDS 16

Included in delivery: Universal shell/face mill holder, lock screw, feather key and drive ring

For details on our FDS wrenches, please refer to page 259

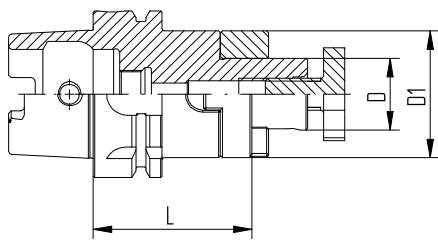
HSK-A: Hole for data carrier DIN STD 69873 in the flange available on request

Universal shell/face mill holders HSK-A/KFD and HSK-E/KFD

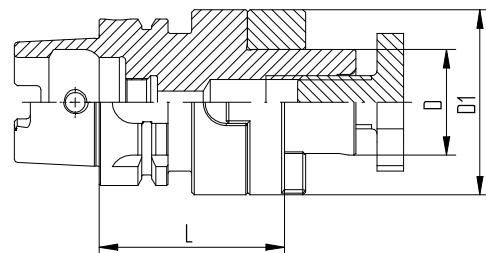
HSK/KFD

DIN 69893

ISO 12164



Drawing 1 HSK-A/KFD



Drawing 2 HSK-A/KFD

Drill chucks HSK-A/KBF

HSK-A/KBF

DIN 69893

ISO 12164

Type	Part no.	d	Dimensions [mm]	
			D	L
HSK-A 63 / KBF				
HSK-A 63 / KBF 1 – 13 mm	2563.50100	1–13	50	104

Included in delivery: Drill chuck and Allen key™

HSK-A: Hole for data carrier DIN STD 69873 in the flange available on request

Drill chucks HSK-A/KBF

Features and benefits

Clamping range

1–13 mm

Runout TIR

0.03 mm

Maximum tightening torque

20 Nm

Clamping force (at 20 Nm tightening torque)

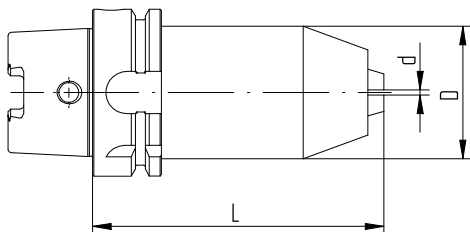
80 Nm

Maximum rpm

35,000 min⁻¹



HSK-A / KBF



HSK-A / KBF

Morse taper holders HSK-A/MK

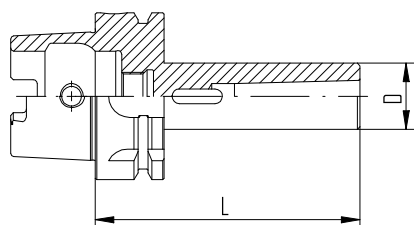
HSK-A/MK

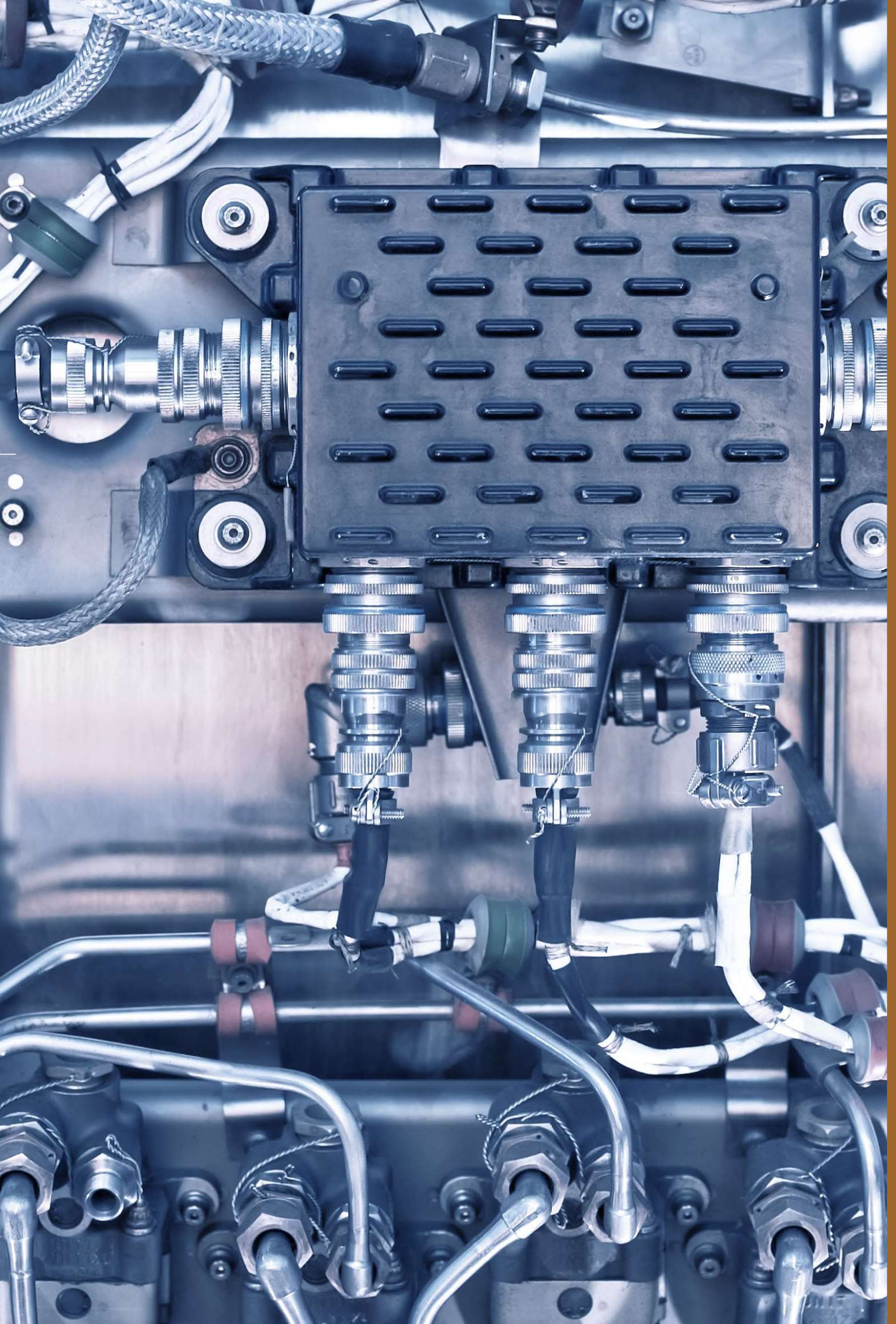
DIN 69893

ISO 12164

Type	Part no.	Dimensions [mm]	
		D	L
HSK-A 63/MK			
HSK-A 63/MK 1 x 100	2563.80140	25	100
HSK-A 63/MK 2 x 120	2563.80250	32	120
HSK-A 63/MK 3 x 140	2563.80360	40	140
HSK-A 63/MK 4 x 160	2563.80470	48	160

HSK-A: Hole for data carrier DIN STD 69873 in the flange available on request





Weldon end mill holders SK/WD

Universally suitable for different machining applications.

DIN 69871 / DIN ISO 7388-1

Features of end mill holders (Weldon)

Runout TIR $\leq 3 \mu\text{m}$

Measured from inner bore to outer taper.

Taper accuracy AT3

Better spindle-to-holder fit and accuracy.

Side locking screw

For highest transferable torque.

Coolant supply

All toolholders with form A+AD can be used for cooling. Form A+AD delivers the coolant supply through the taper.

ID chip hole

In accordance with DIN 69873 for 10 mm diameter.



Weldon end mill holders SK/WD

SK/WD

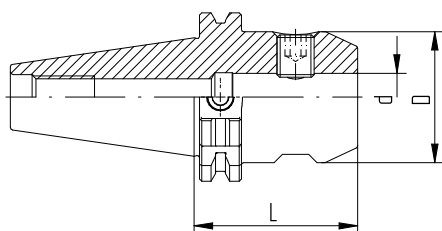
DIN 69871

DIN ISO 7388-1

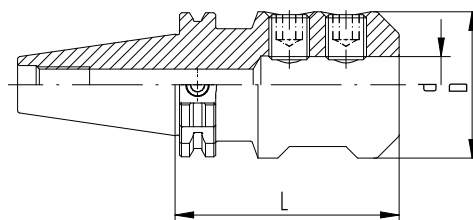
Type	Part no.	Dimensions [mm]			Form A+AD	Drawing
		D	d	L		
SK 40						
SK 40/WD 6 x 050	2240.30620	25	6	50	•	1
SK 40/WD 8 x 050	2240.30820	28	8	50	•	1
SK 40/WD 10 x 050	2240.31020	35	10	50	•	1
SK 40/WD 12 x 050	2240.31220	42	12	50	•	1
SK 40/WD 14 x 050	2240.31420	44	14	50	•	1
SK 40/WD 16 x 063	2240.31630	48	16	63	•	1
SK 40/WD 18 x 063	2240.31830	50	18	63	•	1
SK 40/WD 20 x 063	2240.32030	52	20	63	•	1
SK 40/WD 25 x 100	2240.32560	65	25	100	•	2
SK 40/WD 32 x 100	2240.33260	72	32	100	•	2

SK 50						
SK 50/WD 6 x 063	2250.30630	25	6	63	•	1
SK 50/WD 8 x 063	2250.30830	28	8	63	•	1
SK 50/WD 10 x 063	2250.31030	35	10	63	•	1
SK 50/WD 12 x 063	2250.31230	42	12	63	•	1
SK 50/WD 14 x 063	2250.31430	44	14	63	•	1
SK 50/WD 16 x 063	2250.31630	48	16	63	•	1
SK 50/WD 18 x 063	2250.31830	50	18	63	•	1
SK 50/WD 20 x 063	2250.32030	52	20	63	•	1
SK 50/WD 25 x 080	2250.32550	65	25	80	•	2
SK 50/WD 32 x 100	2250.33260	72	32	100	•	2
SK 50/WD 40 x 100	2250.34060	80	40	100	•	2

Included in delivery: End mill holder and lock screw



Drawing 1 SK/WD



Drawing 2 SK/WD

Universal shell/face mill holders SK/KFD

SK/KFD

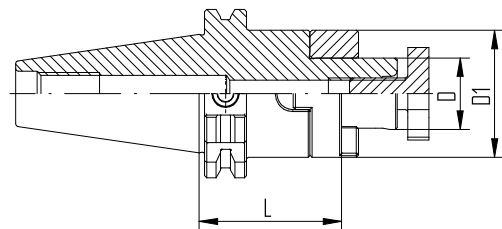
DIN 69871

DIN ISO 7388-1

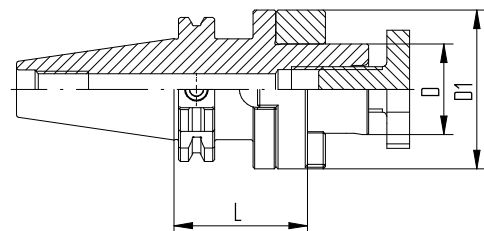
Type	Part no.	Dimensions [mm]					Accessory	
		D	D1	L	Form A+AD	Drawing	Wrench	
SK 40								
SK 40/KFD 16 x 055	2240.41630	16	32	55	•	1	FDS 16	
SK 40/KFD 22 x 055	2240.42230	22	40	55	•	1	FDS 22	
SK 40/KFD 27 x 055	2240.42730	27	48	55	•	1	FDS 27	
SK 40/KFD 32 x 060	2240.43240	32	58	60	•	2	FDS 32	
SK 40/KFD 40 x 060	2240.44040	40	70	60	•	2	FDS 40	
SK 50								
SK 50/KFD 16 x 055	2250.41630	16	32	55	•	1	FDS 16	
SK 50/KFD 22 x 055	2250.42230	22	40	55	•	1	FDS 22	
SK 50/KFD 27 x 055	2250.42730	27	48	55	•	1	FDS 27	
SK 50/KFD 32 x 055	2250.43230	32	58	55	•	1	FDS 32	
SK 50/KFD 40 x 055	2250.44030	40	70	55	•	1	FDS 40	
SK 50/KFD 50 x 070	2250.45050	50	90	70	•	2	FDS 50	

Included in delivery: Universal shell/face mill holder, lock screw, feather key and drive ring

For details on our FDS wrenches, please refer to page 259



Drawing 1 SK/KFD



Drawing 2 SK/KFD

Drill chucks SK/KBF

SK/KBF

DIN 69871

DIN ISO 7388-1

Type	Part no.	Dimensions [mm]				
		D	d	L	Form A	Form A+AD
SK 30						
SK 30/KBF 1 – 13 mm	2230.50100	50	1–13	111	•	–
SK 40						
SK 40/KBF 1 – 13 mm	2240.50103	50	1–13	90	–	•
SK 50						
SK 50/KBF 1 – 13 mm	2250.50103	50	1–13	106	–	•

Included in delivery: Drill chuck and Allen key™

Drill chucks SK/KBF

Features and benefits

Clamping range

1–13 mm

Runout TIR

0.03 mm

Maximum tightening torque

20 Nm

Clamping force (at 20 Nm tightening torque)

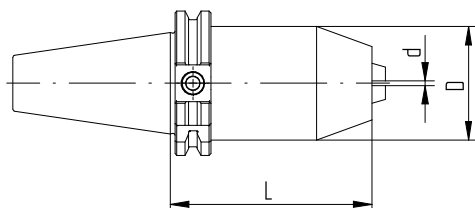
80 Nm

Maximum rpm

35,000 min⁻¹



SK/KBF



SK/KBF

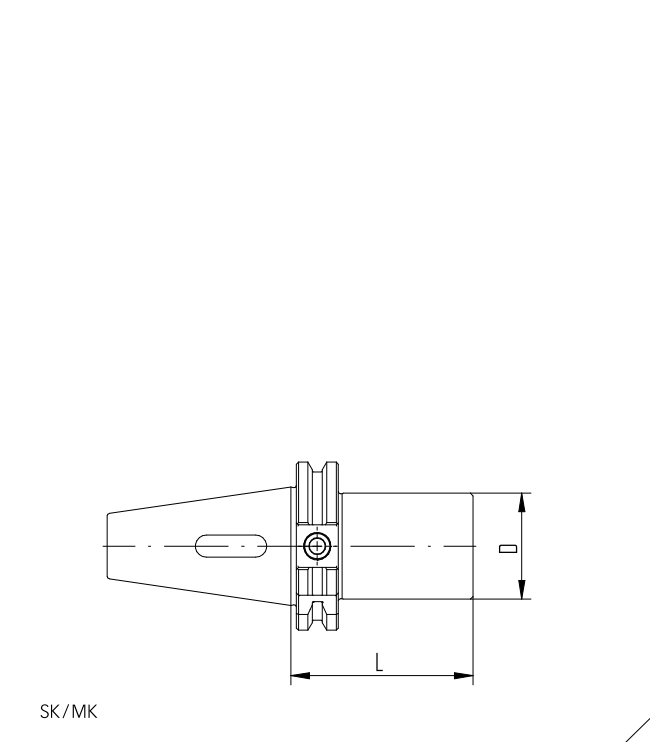
Morse taper holders SK/MK

SK/MK

DIN 69871

DIN ISO 7388-1

Type	Part no.	Dimensions [mm]	
		D	L
SK 40			
SK 40/MK 1 x 050	2240.80110	25	50
SK 40/MK 2 x 050	2240.80210	32	50
SK 40/MK 3 x 070	2240.80320	40	70
SK 40/MK 4 x 095	2240.80430	48	95



Weldon end mill holders BT/WD

Universally suitable different machining applications, the BT interface toolholders cater to different machining needs.

MAS 403 / JIS B 6339 / DIN ISO 7388-2

Features of end mill holders (Weldon)

Runout TIR $\leq 3 \mu\text{m}$

Measured from inner bore to outer taper.

Taper accuracy AT3

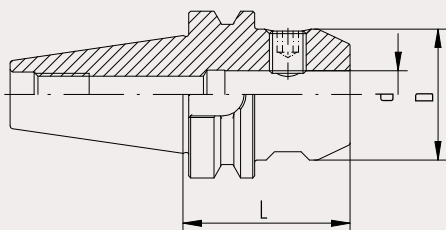
Better spindle-to-holder fit and accuracy.

Side locking screw

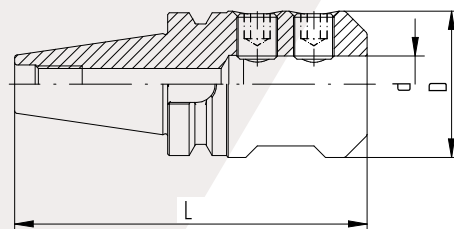
For highest transferable torque.

Coolant supply

All toolholders with form A+AD can be used for cooling. Form A+AD delivers the coolant supply through the taper.



Drawing 1 BT/WD



Drawing 2 BT/WD

Weldon end mill holders BT/WD

BT/WD

MAS 403

JIS B 6339

DIN ISO 7388-2

Type	Part no.	Dimensions [mm]			Form A+AD	Drawing
		D	d	L		
BT 30						
BT 30/WD 6 x 050	2130.30620	25	6	50	•	1
BT 30/WD 8 x 050	2130.30820	28	8	50	•	1
BT 30/WD 10 x 050	2130.31020	35	10	50	•	1
BT 30/WD 12 x 050	2130.31220	42	12	50	•	1
BT 30/WD 14 x 050	2130.31420	44	14	50	•	1
BT 30/WD 16 x 063	2130.31630	48	16	63	•	1
BT 30/WD 18 x 063	2130.31830	50	18	63	•	1
BT 30/WD 20 x 063	2130.32030	52	20	63	•	1
BT 40						
BT 40/WD 6 x 050	2140.30620	25	6	50	•	1
BT 40/WD 8 x 050	2140.30820	28	8	50	•	1
BT 40/WD 10 x 063	2140.31030	35	10	63	•	1
BT 40/WD 12 x 063	2140.31230	42	12	63	•	1
BT 40/WD 14 x 063	2140.31430	44	14	63	•	1
BT 40/WD 16 x 063	2140.31630	48	16	63	•	1
BT 40/WD 18 x 063	2140.31830	50	18	63	•	1
BT 40/WD 20 x 063	2140.32030	52	20	63	•	1
BT 40/WD 25 x 090	2140.32550	65	25	90	•	2
BT 40/WD 32 x 100	2140.33260	72	32	100	•	2
BT 50						
BT 50/WD 6 x 063	2150.30630	25	6	63	•	1
BT 50/WD 8 x 063	2150.30830	28	8	63	•	1
BT 50/WD 10 x 063	2150.31030	35	10	63	•	1
BT 50/WD 12 x 080	2150.31250	42	12	80	•	1
BT 50/WD 14 x 080	2150.31450	44	14	80	•	1
BT 50/WD 16 x 080	2150.31650	48	16	80	•	1
BT 50/WD 18 x 080	2150.31850	50	18	80	•	1
BT 50/WD 20 x 080	2150.32050	52	20	80	•	1
BT 50/WD 25 x 100	2150.32560	65	25	100	•	2
BT 50/WD 32 x 105	2150.33260	72	32	105	•	2
BT 50/WD 40 x 110	2150.34060	80	40	110	•	2

Included in delivery: End mill holder and lock screw

Universal shell/face mill holders BT/KFD

BT/KFD

MAS 403

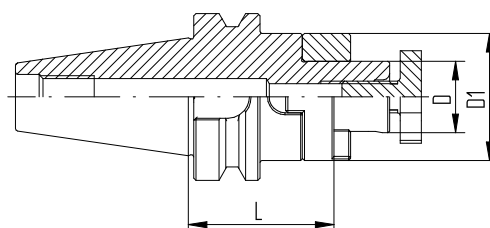
JIS B 6339

DIN ISO 7388-2

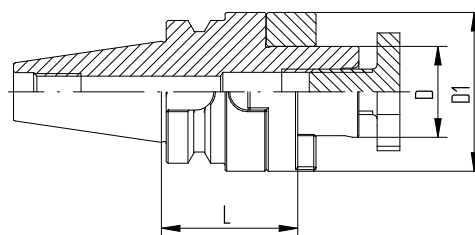
Type	Part no.	Dimensions [mm]					Accessory	
		D	D1	L	Form A+AD	Drawing	Wrench	
BT 30								
BT 30/KFD 16 x 045	2130.41620	16	32	45	•	1	FDS 16	
BT 30/KFD 22 x 047	2130.42220	22	40	47	•	1	FDS 22	
BT 30/KFD 27 x 049	2130.42720	27	48	49	•	2	FDS 27	
BT 30/KFD 32 x 053	2130.43230	32	58	53	•	2	FDS 32	
BT 40								
BT 40/KFD 16 x 055	2140.41630	16	32	55	•	1	FDS 16	
BT 40/KFD 22 x 055	2140.42230	22	40	55	•	1	FDS 22	
BT 40/KFD 27 x 055	2140.42730	27	48	55	•	1	FDS 27	
BT 40/KFD 32 x 060	2140.43240	32	58	60	•	1	FDS 32	
BT 40/KFD 40 x 060	2140.44040	40	70	60	•	2	FDS 40	
BT 50								
BT 50/KFD 16 x 070	2150.41630	16	32	70	•	1	FDS 16	
BT 50/KFD 22 x 070	2150.42230	22	40	70	•	1	FDS 22	
BT 50/KFD 27 x 070	2150.42750	27	48	70	•	1	FDS 27	
BT 50/KFD 32 x 070	2150.43250	32	58	70	•	1	FDS 32	
BT 50/KFD 40 x 070	2150.44050	40	70	70	•	1	FDS 40	
BT 50/KFD 50 x 070	2150.45050	50	90	70	•	1	FDS 50	

For details on our FDS wrenches, please refer to page 259

Included in delivery: Universal shell/face mill holder, lock screw, feather key and drive ring



Drawing 1 BT/KFD



Drawing 2 BT/KFD

Drill chucks BT /KBF

BT /KBF

MAS 403

JIS B 6339

DIN ISO 7388-2

Type	Part no.	d	Dimensions [mm]			
			D	L	Form A	Form A+AD
BT 30						
BT 30/KBF 1 – 13 mm	2130.50100	1–13	50	95	•	–
BT 40						
BT 40/KBF 1 – 13 mm	2140.50103	1– 13	50	98	–	•
BT 50						
BT 50/KBF 1 – 13 mm	2150.50103	1– 13	50	100	–	•

Included in delivery: Drill chuck and Allen key™

Drill chucks BT /KBF

Features and benefits

Clamping range

1–13 mm

Runout TIR

0.03 mm

Maximum tightening torque

20 Nm

Clamping force (at 20 Nm tightening torque)

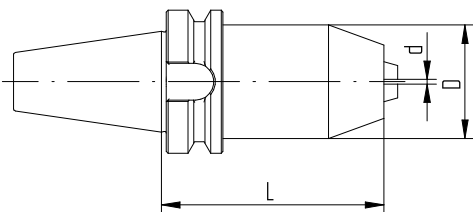
80 Nm

Maximum rpm

35,000 min⁻¹



BT /KBF



BT /KBF

Morse taper holders BT / MK

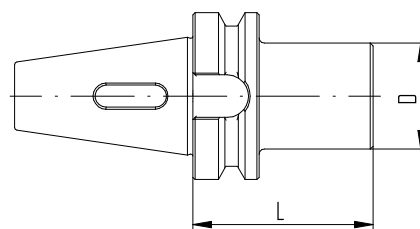
BT / MK

MAS 403

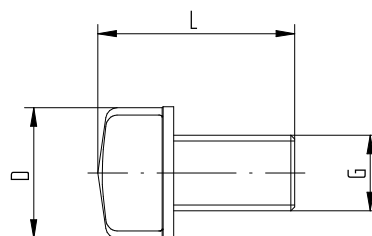
JIS B 6339

DIN ISO 7388-2

Type	Part no.	Dimensions [mm]	
		D	L
BT 40			
BT 40/MK 1 x 050	2140.80110	25	50
BT 40/MK 2 x 050	2140.80210	32	50
BT 40/MK 3 x 070	2140.80320	40	70
BT 40/MK 4 x 095	2140.80430	48	95



Type	Part no.	G	Dimensions [mm]	
			D	L
Tangs ATL				
ATL 6/MK 1	7221.01000	M 6	8.5	21.5
ATL 10/MK 2	7221.02000	M 10	13.5	30.5
ATL 12/MK 3	7221.03000	M 12	18.5	35
ATL 16/MK 4	7221.04000	M 16	24.5	41
ATL 20/MK 5	7221.05000	M 20	35	52



C/WD

REGO-FIX CAPTO licensed by Sandvik Coromant

End mill holders REGO-FIX C/WD

These self-centering and balanced holders enable a high torque transmission and show a high bending strength.

ISO 12164

Features of end mill holders (Weldon)

Runout TIR $\leq 3 \mu\text{m}$

Measured from inner bore to outer taper.

Side locking screw

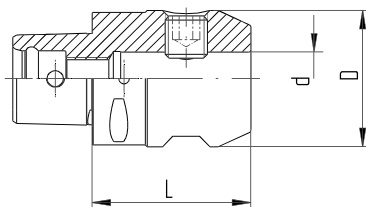
For highest transferable torque.

Certified REGO-FIX CAPTO – licensed by Sandvik Coromant – is manufactured at REGO-FIX Switzerland under license according to CAPTO specifications.

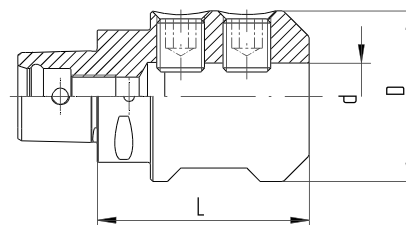


End mill holders REGO-FIX C / WD

Type	Part no.	Dimensions [mm]			Drawing
		D1	d	L	
C3					
C3 / WD 6 x 045	2803.30610	25	6	45	1
C3 / WD 8 x 045	2803.30810	28	8	45	1
C3 / WD 10 x 050	2803.31020	35	10	50	1
C3 / WD 12 x 055	2803.31220	42	12	55	1
C4					
C4 / WD 6 x 050	2804.30620	25	6	50	1
C4 / WD 8 x 050	2804.30820	28	8	50	1
C4 / WD 10 x 050	2804.31020	35	10	50	1
C4 / WD 12 x 055	2804.31220	42	12	55	1
C4 / WD 14 x 055	2804.31420	44	14	55	1
C4 / WD 16 x 055	2804.31620	48	16	55	1
C5					
C5 / WD 6 x 050	2805.30620	25	6	50	1
C5 / WD 8 x 050	2805.30820	28	8	50	1
C5 / WD 10 x 055	2805.31020	35	10	55	1
C5 / WD 12 x 060	2805.31230	42	12	60	1
C5 / WD 14 x 060	2805.31430	44	14	60	1
C5 / WD 16 x 060	2805.31630	48	16	60	1
C5 / WD 18 x 060	2805.31830	50	18	60	1
C5 / WD 20 x 060	2805.32030	52	20	60	1
C5 / WD 25 x 080	2805.32550	65	25	80	2



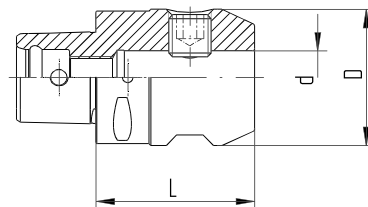
Drawing 1 C / WD



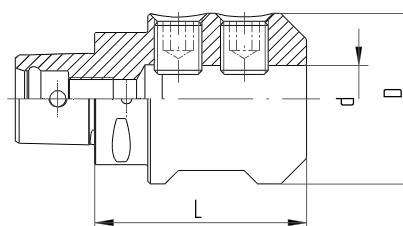
Drawing 2 C / WD

End mill holders REGO-FIX C/WD

Type	Part no.	Dimensions [mm]			Drawing
		D1	d	L	
C6					
C6/WD 6 x 055	2806.30620	25	6	55	1
C6/WD 8 x 055	2806.30820	28	8	55	1
C6/WD 10 x 060	2806.31030	35	10	60	1
C6/WD 12 x 060	2806.31230	42	12	60	1
C6/WD 14 x 060	2806.31430	44	14	60	1
C6/WD 16 x 065	2806.31630	48	16	65	1
C6/WD 18 x 065	2806.31830	50	18	65	1
C6/WD 20 x 065	2806.32030	52	20	65	1
C6/WD 25 x 080	2806.32550	65	25	80	2
C6/WD 32 x 090	2806.33250	72	32	90	2
C6/WD 40 x 100	2806.34060	80	40	100	2
C8					
C8/WD 6 x 070	2808.30640	25	6	70	1
C8/WD 8 x 070	2808.30840	28	8	70	1
C8/WD 10 x 070	2808.31040	35	10	70	1
C8/WD 12 x 070	2808.31240	42	12	70	1
C8/WD 14 x 070	2808.31440	44	14	70	1
C8/WD 16 x 070	2808.31640	48	16	70	1
C8/WD 18 x 070	2808.31840	50	18	70	1
C8/WD 20 x 070	2808.32040	52	20	70	1
C8/WD 25 x 080	2808.32550	65	25	80	2
C8/WD 32 x 080	2808.33250	72	32	80	2
C8/WD 40 x 110	2808.34060	80	40	110	2



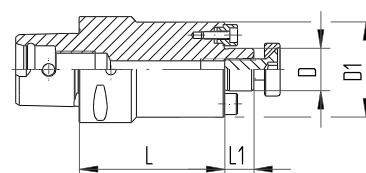
Drawing 1 C/WD



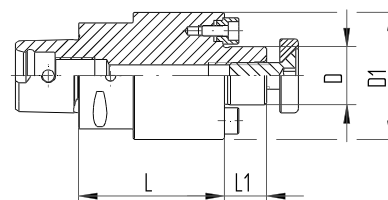
Drawing 2 C/WD

Shell mill arbors REGO-FIX C/MA

Type	Part no.	Dimensions [mm]				Drawing
		D	D1	L	L1	
C3						
C3/MA 16 x 030	2803.01610	16	36	30	11	2
C4						
C4/MA 16 x 032	2804.01610	16	36	32	11	1
C4/MA 16 x 055	2804.01620	16	36	55	11	1
C4/MA 22 x 025	2804.02210	22	48	25	16	2
C4/MA 22 x 055	2804.02220	22	48	55	16	2
C5						
C5/MA 16 x 035	2805.01610	16	36	35	11	1
C5/MA 16 x 070	2805.01640	16	36	70	11	1
C5/MA 22 x 025	2805.02210	22	50	25	16	1
C5/MA 22 x 070	2805.02240	22	48	70	16	1
C5/MA 27 x 025	2805.02710	27	56	25	18	2
C5/MA 32 x 040	2805.03210	32	65	40	20	2



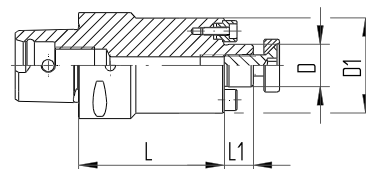
Drawing 1 C/MA



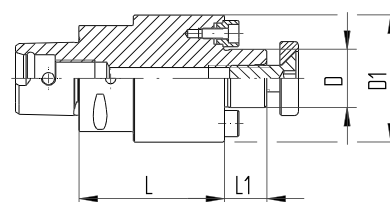
Drawing 2 C/MA

Shell mill arbors REGO-FIX C/MA

Type	Part no.	Dimensions [mm]				Drawing
		D	D1	L	L1	
C6						
C6/MA 16 x 040	2806.01610	16	36	40	11	1
C6/MA 22 x 025	2806.02210	22	55	25	16	1
C6/MA 27 x 025	2806.02710	27	63	25	18	1
C6/MA 32 x 025	2806.03210	32	65	25	20	2
C6/MA 40 x 040	2806.04010	40	80	40	23	2
C8						
C8/MA 16 x 050	2808.01620	16	36	50	11	1
C8/MA 22 x 030	2808.02210	22	55	30	16	1
C8/MA 27 x 030	2808.02710	27	65	30	18	1
C8/MA 32 x 030	2808.03210	32	80	30	20	1
C8/MA 40 x 030	2808.04010	40	80	30	23	1



Drawing 1 C/MA



Drawing 2 C/MA